

The gap between the stud or joist face and the back of the furring is created by the oversized mounting block. This forces the noise energy to travel through the silicone core where it bogs down and dissipates as a small measure of heat

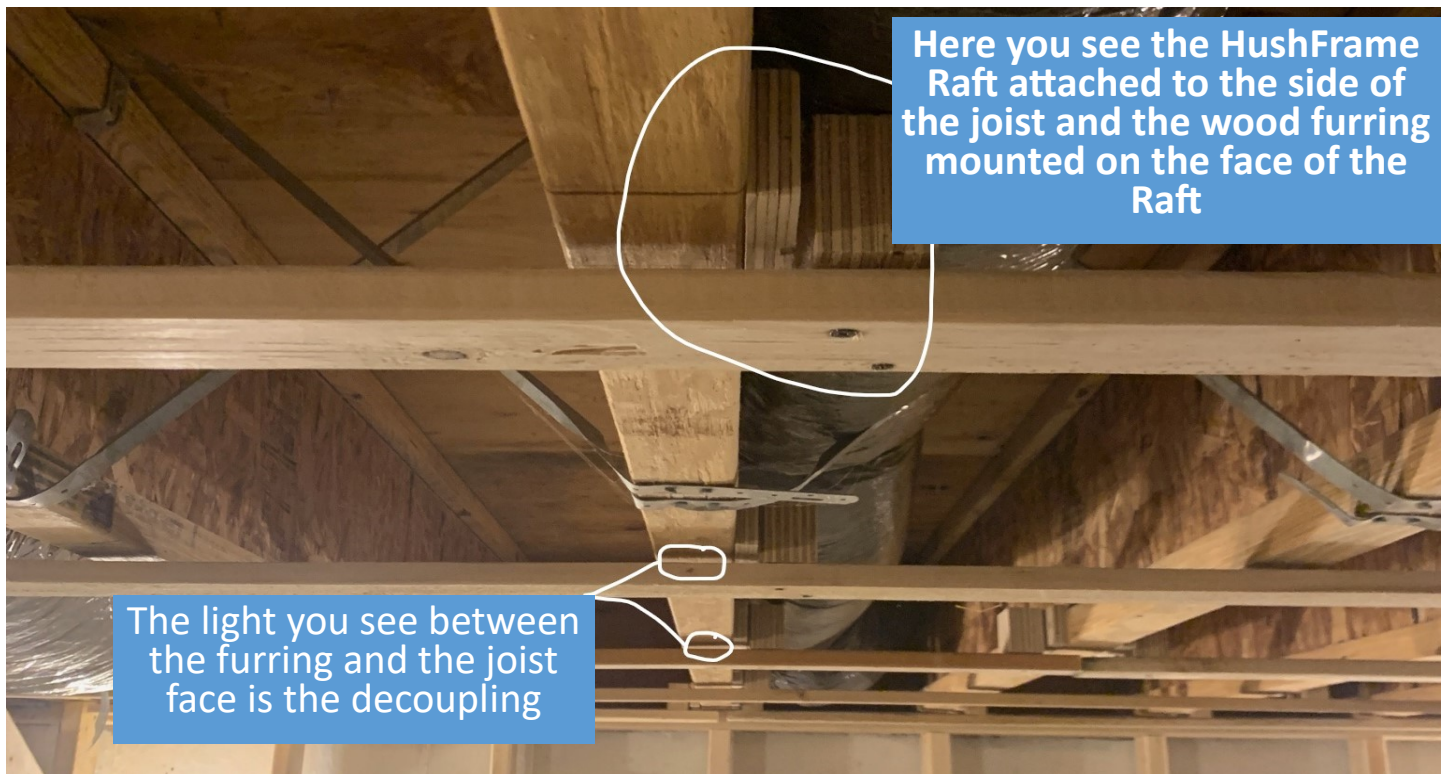
This gap created between the face of the stud or joist and the back side of the furring or hat channel is what provides the decoupling effect

The furring strip or hat channel is screwed to the face of this block

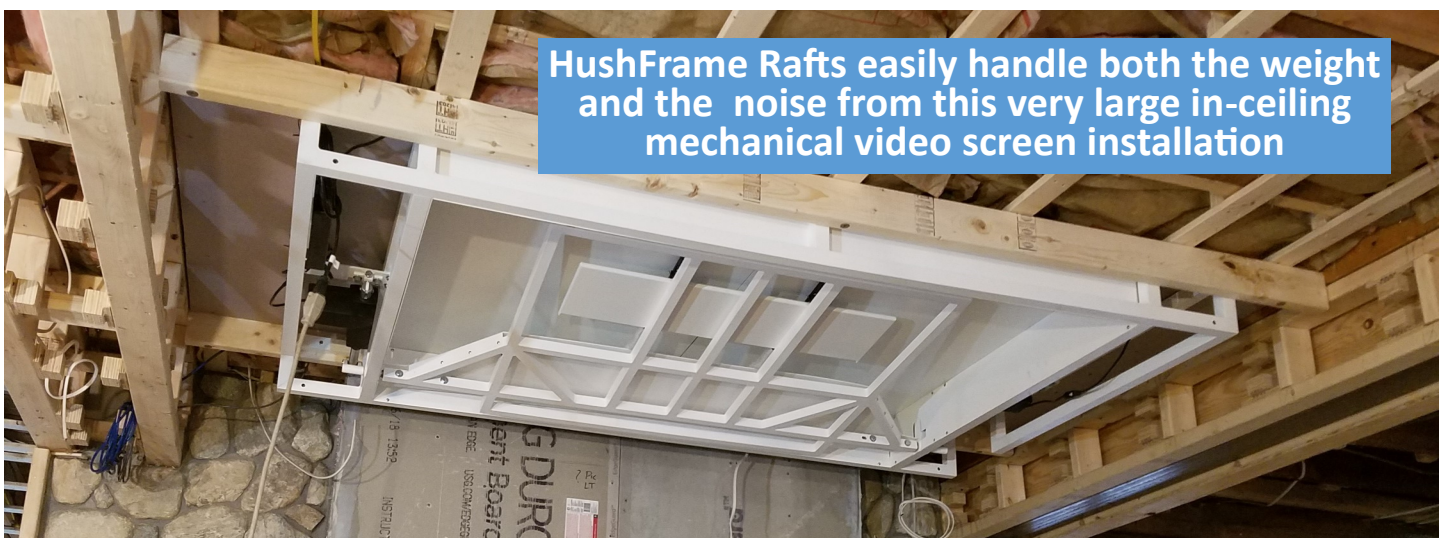
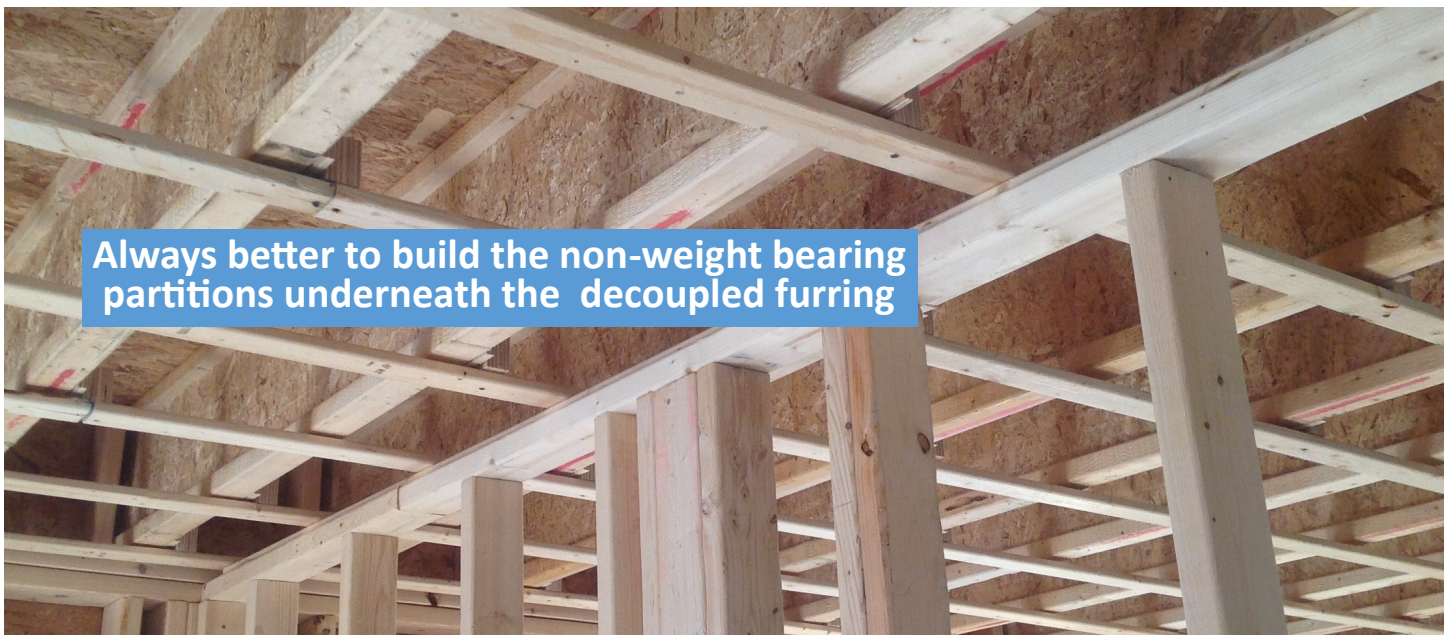
The edge aligns with the face of the stud or joist

This section of the Raft is fastened to the side of the stud or joist

This silicone core is where the noise energy gets trapped

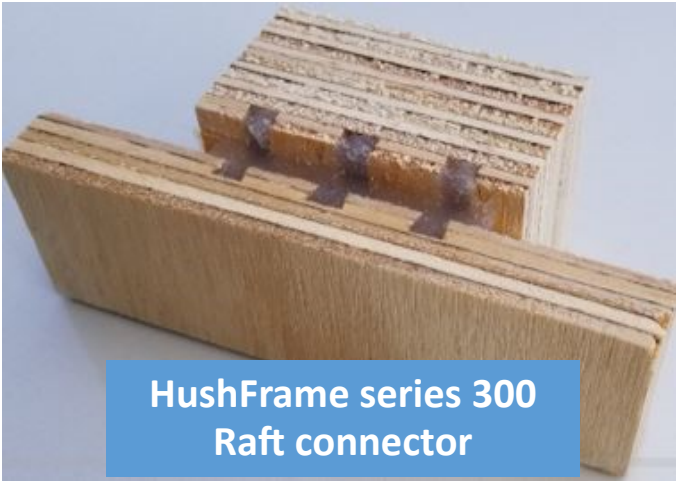









Everything mechanical needs to be isolated to the decoupled furring



HushFrame series 300  
Raft connector



All device boxes - Nothing  
mounted on the framing



Exhaust fans



Duct chase ways



In-ceiling speakers



Light cans